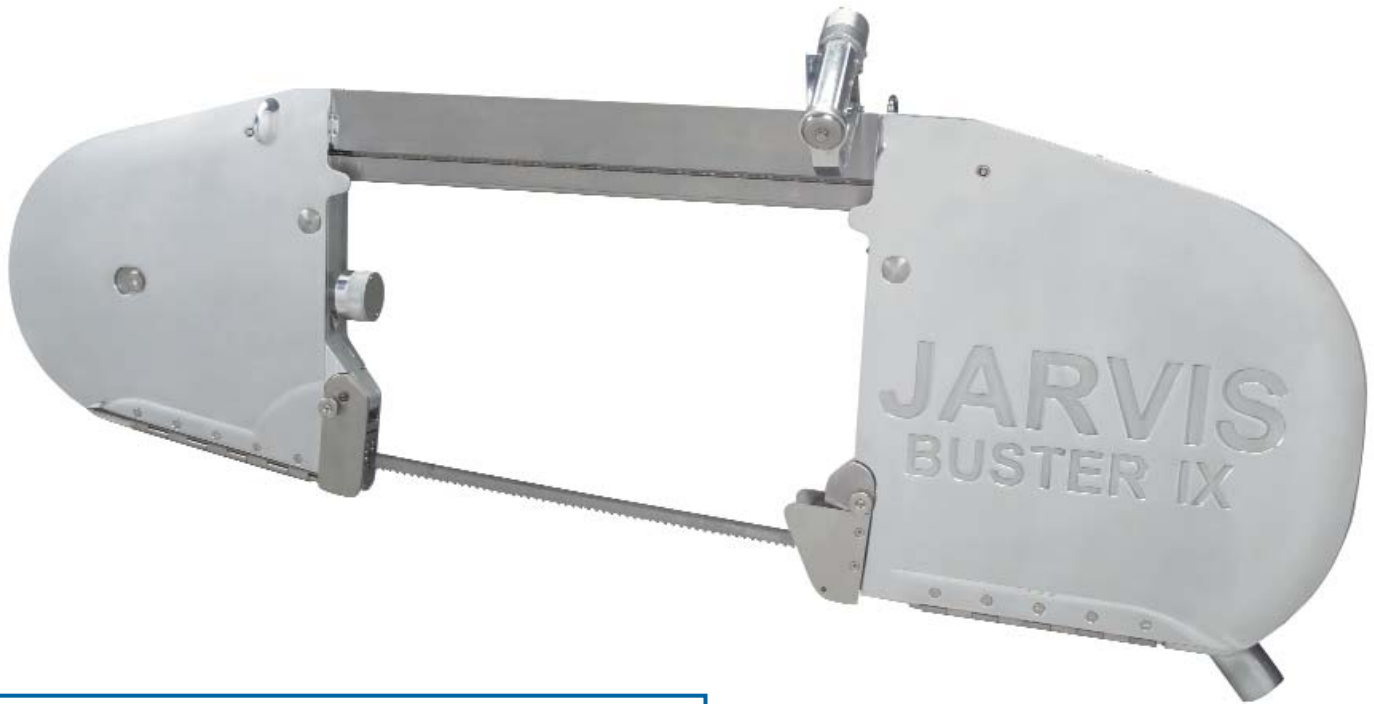


CARCASS SPLITTING BANDSAW

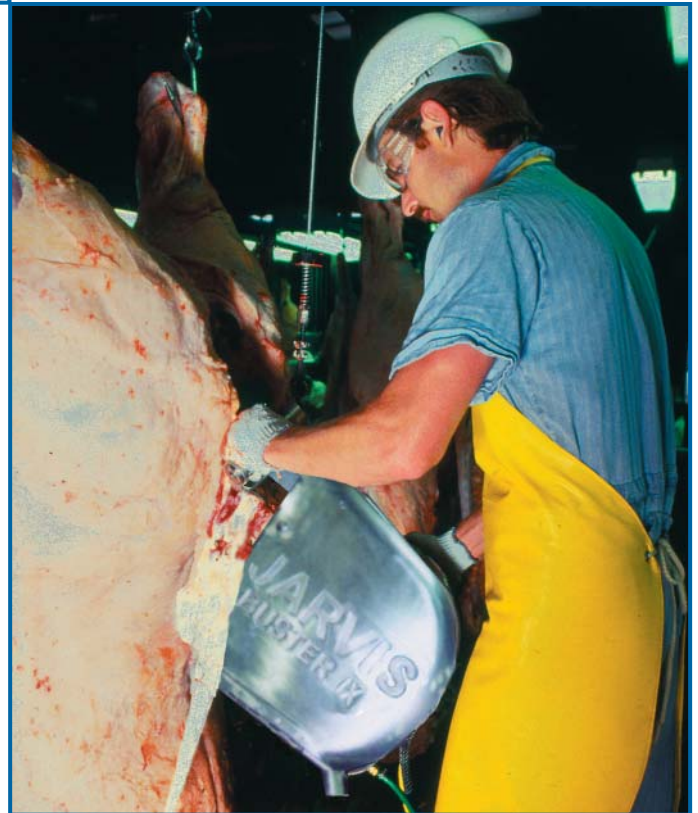
Model Buster IX



The Jarvis Model Buster IX - electrically powered bandsaw.

JARVIS

- Used for splitting beef, pigs and horses.
- Superior designed external and internal spray plumbing system:
 - Reduces rate of organic material accumulation within saw housing
 - Prevents build-up of central nervous system proteins on saw blade
- Reduces missplits
- Suited for hot and cold water spray
- Eliminates need to immerse saw for stationary hot water sterilization
- Built to CE specifications and approved to all European standards.
- Available in all voltages.



ULTIMATE POWER - EXCELLENT HANDLING

CARCASS SPLITTING BANDSAW

Model Buster IX

Specifications

Drive	Electric	
Model Buster IX		
Motor Power	3.3 hp	2500 W
Operating Voltage	380-400 / 230 / 42 V, 3 phase, 50 Hz 460 / 380 / 240 / 220 V, 3 phase, 60 Hz	
Capacity	180 / hour	
Control Handles	Electric Dual Anti-tie Down	12 V
Distance Between Guides	19.75 in	502 mm
Blade Length	127 in	3226 mm
Overall Length	57 in	1448 mm
Weight	218 lbs	99 kg

Equipment Selection and Accessories

Order Number

Model Buster IX		
3.3 horse power		
	42 V, 3 phase, 50 Hz	4006194
	380-400 / 230 V, 3 phase, 50 Hz	4006195
	415 V, 3 phase, 50 Hz	4006203
	480 / 240 V, 3 phase, 60 Hz	4006196
	380 / 220 V, 3 phase, 60 Hz	4006197
Blade		
	standard blade	1023159
	JET Superior - double life - blade	1023620
Spring Balancer		4042038
Air Balancers		
	Travel 108 in / 2743 mm, total length 48 in / 1219 mm cylinder	4042016
	Travel 108 in / 2743 mm, total length 120 in / 3048 mm cylinder	4042020



Products for the meat and poultry industry

Jarvis Products Corporation · 33 Anderson Road · Middletown, CT 06457-4926 · United States of America
Telephone (860) 347-7271 · Fax (860) 347-9905 · jarvis.products.corp@snet.net · www.jarvisproducts.com